



# TREASURE TROVE IN SCOTLAND

REPORT BY QUEEN'S AND LORD TREASURER'S  
REMEMBRANCER

2014/2015



**Treasure  
Trove**

*Protecting our  
Archaeological Heritage  
for the Nation*

## CONTENTS

	<b>Page</b>
Foreword and Report by QLTR	1
Introduction	3
Remit of SAFAP	3
Report by the Chair of SAFAP	3
Interesting Cases	6
Statistics	11
The work of the Treasure Trove Unit	12
Allocation procedures	13
Funding	13
TTU Contact details	13
Information for users of the Treasure Trove system	14
Comments from Readers	14
<b>APPENDICES</b>	<b>15</b>
Appendix 1 - Names and professional status of members of SAFAP	16
Appendix 2 - Terms of Reference of SAFAP	20
Appendix 3 - List of allocated Finds, their find spots and recipient museums	22
Appendix 4 - List of Finders whose finds were claimed in this reporting year and who have agreed to their name being published	30
Appendix 5 - 2 Flow Charts – Chance Finds and Excavation assemblages	31
Appendix 6 – TTU Contact details (as at October 2015)	33
Appendix 7 - Information for users of the Treasure Trove system	34
Appendix 8 – Standard Reporting form for chance Finds	38

## **TREASURE TROVE IN SCOTLAND - REPORT BY QUEEN'S AND LORD TREASURER'S REMEMBRANCER**

Following on from our public consultation on proposed changes to the Treasure Trove Code of Practice, this is the first year in which the changes have been implemented, introducing a number of welcome additions across the system. They give the finder greater recognition in the process, with the option for them to be publicly credited in a museum display.

At the same time the revised Code makes things easier for heritage professionals; for museums applying to be allocated Treasure Trove objects and also giving archaeologists who excavate material the opportunity to provide an assessment of the significance of their assemblage to interested museums.

That should make the work of the Scottish Archaeological Finds Allocation Panel (SAFAP) quicker and more open, allowing all involved to benefit from these improvements to the system.

The work of SAFAP is vital to the system; and I am very grateful to that panel of independent heritage experts, who advise me on the suitable allocation of objects to museums and provide a fair and balanced means to ensure that all parties - from the finders through to museums - are treated equitably.

I am delighted to report a further rise in the number of objects reported to the Treasure Trove Unit. You can read more about the work of the TTU members in their section of this report. Their outreach program continues to encourage good practice and reporting of finds by engaging with, and educating, both the public and museums about the Treasure Trove process. A particularly important aspect of this is building good working relations with all metal detector users, who are the members of the public who continue to find the majority of objects.

The most significant find in this period was undoubtedly the discovery of a Viking hoard in Galloway. It was also a first class example of good practice in action, with

the finder alerting the TTU immediately who in turn arranged the recovery of the material in collaboration with local authority archaeologists. Not surprisingly this discovery attracted international media attention and the TTU are currently working in close collaboration with a number of other key Scottish heritage sector organisations to ensure that the hoard can be considered by SAFAP in the coming year.

In addition to the many Roman objects and Medieval gold and silver, other finds highlighted in this report come from amazingly different social times and circumstances. The list includes a toilet implement from 16th century, and from the 17th century a toy. Proof that what may seem a relatively unremarkable object at first sight can actually play a significant role in our understanding of Scotland's past and our common cultural heritage. It is a pleasure to be able to make use of this Annual Report to record again my thanks to the public spirited finders whose declaration of their finds to the TTU is what ultimately allows all of us to enjoy them.



*Catherine Dyer*

**Catherine Dyer**

Queen's and Lord Treasurer's Remembrancer

October 2015

## **INTRODUCTION**

1. This report covers Treasure Trove matters dealt with by the Queen's and Lord Treasurer's Remembrancer ("QLTR") and by the Scottish Archaeological Finds Allocation Panel ("SAFAP"), from 1 April 2014 to 31 March 2015.

## **REMIT OF SAFAP**

2. A list of the names and professional status of the current members of SAFAP, all of whom serve unpaid, is provided in [Appendix 1](#) to this Report.

3. This report therefore covers one year of the operation of the SAFAP, which meets approximately every four months. The Terms of Reference approved by the Scottish Government are reproduced in [Appendix 2](#).

## **REPORT BY THE CHAIR OF SAFAP**

4. During the past year the revised Code of Practice has come into effect and, judging from the feedback received to date, it seems to have streamlined the application process for museums and clarified terminology. The Panel, supported by the TTU, have been monitoring its impact and taking action on any minor anomalies which have come to light through its application. Fortunately, these have been very few.

The Panel met on 3 July and 6 November. In a forced re-scheduling as a result of being non quorate, the meeting scheduled for 26 March was rearranged for 1 May. The annual review meeting with the QLTR took place on 13 November; the presence of Jane Carmichael, (Head of Collections at NMS) was greatly appreciated as part of the ongoing partnership between the QLTR, NMS and the Scottish Government in the operation of treasure trove through the Treasure Trove Unit (TTU). The July meeting took place at the McManus Gallery, Dundee, where local stakeholders met and chatted with Panel members over lunch. This is the second time the Panel has met outside Edinburgh and these occasions have already proved useful in enabling users of Treasure Trove to meet and talk with Panel members, while Panel members have enjoyed the opportunity to introduce themselves and find out more about local archaeological activities. In 2015 a meeting in Glasgow is planned.

The expansion of SAFAP's membership through the addition of both a second professional member and a permanent representative of Historic Scotland has strengthened the Panel archaeological expertise. At the same time communication, outreach and collaboration within the sector continues to improve; both TTU and the Panel have increased their outreach activity and social media are proving vital to maintain regular and up-to-date communication with all parts of the sector.

During the year 284 objects found by members of the public and 31 assemblages found by professional archaeologists (469 objects and 80 assemblages had the meeting on 26 March had not been deferred) have been considered by the Panel. Of these the vast majority have gone to local museums although several went to museums acting in a capacity of 'last resort' by taking objects that local museums were unable to acquire (and these cases are noted in [Appendix 3](#)). In addition 2 cases of chance finds and 4 assemblages were disclaimed (11 chance finds and 22 assemblages had the meeting on 26 March had not been deferred). There seems to be evidence of increasing numbers of chance finds being taken either by the museums of last resort or disclaimed in the absence of applications from museums which would normally have expressed interest in local finds. This is a cause for concern to the TTU, QLTR and SAFAP since a sustained high level of disclaims could impact negatively on the operation of Treasure Trove. The reasons for the lack of interest appear to include financial pressures and loss of specialist expertise in local authority museums; the Panel is seeking further data on the levels of archaeological curatorship across the sector and consulting with the TTU and I acknowledge the role played by Panel members Jilly Burns (NMS) and Jennifer Siswell (MGS) in collating this information.

The highlight of the year has been the discovery of the Viking hoard from Galloway during the summer of 2014. While this has yet to reach the Panel, it has thrown up issues unprecedented in the previous operation of Treasure Trove in Scotland because of the scale, complexity and likely value of the find.

Resources across Scotland for the excavation, conservation and care of archaeological artefacts are fragile. This is apparent in the time required for the investigation of the Hoard since some specialised skills are in high demand and short supply. SAFAP acknowledges with thanks Historic Scotland's substantial contribution to the documentation, analysis and conservation work, in

collaboration with MGS and NMS. It was a great pleasure for SAFAP members to be invited to the session at the National Museum of Scotland in November when some of the Hoard and specialist scans were viewed and discussed by experts from across the country and with the active participation of the finders. SAFAP anticipates holding a special meeting to consider the Hoard once conservation has been completed and will draw on external expertise to assist in the valuation of this unique and complex group of objects.

Membership of the Panel has been unchanged in the past year and there is a vacancy for a lay member which we hope to see advertised very shortly. As always I am grateful for the expertise, time and thought brought to Panel deliberations by all Panel members, by Andrew Brown, Solicitor to the QLTR, Catriona Ogg, QLTR administrator, and by Stuart Campbell and Dr Natasha Ferguson in all the varied responsibilities of the TTU.

**Evelyn Silber,**  
Chair of the Scottish Archaeological Finds Allocation Panel

## INTERESTING CASES

5. The following objects represent a selection of Treasure Trove cases allocated to museums by the Crown during the period April 2014 to March 2015.

TT.86/14 & TT.87/14 Iron Age (1st-2nd century AD) Torc and Brooch, Nairn, Highland

This impressive bronze torc (intended to be worn around the neck) is the first of its type found in Scotland, and the appearance indicates a locally made item that resembles those found elsewhere in the British Isles. It is a highly complex object, made from both cast and twisted bronze and the wear on the inside indicates it was used extensively. The brooch is also a significant find, a native form that has clearly evolved from the far smaller and plainer Roman brooches into a massive and highly decorative style. It has been cast in a very complex manner, and is heavily decorated with red and yellow enamel cells. Both are imposing objects and would have functioned as symbols of status to demonstrate the importance of the wearer. The discovery of two such unusual objects so close together suggest they may have been buried as a ritual act, a religious offering where items are removed from use in this world and offered instead to the gods. Allocated to National Museums Scotland.





TT.15/14 17th century Toy Pan, Dumbarton, West Dunbartonshire

A cast lead alloy miniature pot or pan, representing a typical 17th century type. The 17th century saw an expansion in the type and quantity of toys offered for children, part of a wider category of consumer goods which were manufactured and traded in increasingly large numbers. Many of these toys conformed to standard expectations of gender and behaviour and this find is a good example of the type of household object produced in miniature as a toy for girls. Allocated to Clydebank Museum & Art Gallery.



TT.17/14 16th century Toilet Implement, Cupar, Fife

A silver nail cleaner, now broken at the suspension loop but otherwise intact. The cleaner has been engraved along one side with the motto 'PRENES+EN+GRE' for the French *prenez en gre*, or 'accept with gratitude', an abbreviated form of the phrase 'accept with gratitude the gift of him who loves you'. This form of words is commonly associated with objects given as a romantic gift. As an item that would be worn as much as an item of jewellery this object is an interesting illustration of the manner in which fashion, hygiene and cleanliness began to be seen as interlinked. Allocated to Fife Cultural Trust.



TT.43/14 Fragment of Medieval altar stone, Wick, Highland

The remains of a portable medieval altar stone, when complete the stone would have had five crosses representing the five wounds that Christ sustained on the cross. Such stones could be carried from place to place and used on a wooden altar. This example was found in building rubble and appears to have been incorporated into the building. Such cases are not unknown, and may represent a belief in the talismanic properties of the altar stone. Allocated to Dunbeath Heritage Centre.



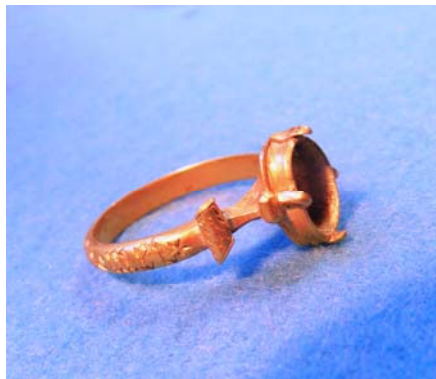
TT.47/14 17th Century Finger Ring, Inverbervie, Aberdeenshire

Although superficially similar to modern wedding rings, 17th century rings contained a romantic inscription (or poesy). In this case the inscription reads The God above increas our love. The majority of inscriptions can be found in a variety of books aimed at a male audience, such as the popular Cupid's Posies which contained both useful advice on wooing and an appendix of suitable poesies for the wedding ring itself. Allocated to Aberdeenshire Heritage.



TT.92/14 15th century Gold Finger Ring, Loch Leven, Perth & Kinross

A substantial gold finger ring with the bezel set for a stone, although this is now missing. The exterior of the hoop is engraved with the inscription 'mat m memeto mei', a contraction or variation on the common 'mater dei, memento mei', or 'Mother of God, remember me'. The ring is undoubtedly a high quality piece that would represent a challenge to the medieval goldsmith and in both complexity and form this is an unusual survival in a Scottish context. Allocated to National Museums Scotland.



TT.97/14 Roman Brooch, Carnwath, South Lanarkshire

An unusual type of Roman brooch, consisting of a flat circular design with a central boss of black glass. The front of the brooch has been decorated with a sunburst design in red enamel. Unlike many brooches which are undoubtedly Roman in origin, this type of brooch is best described as Romano-British, representing a fusion of both Roman and native cultural styles. Allocated to Biggar Museum Trust.



## STATISTICS

6. [Appendix 3](#) lists the finds claimed as Treasure Trove, with information as to each find spot and where the item found was allocated. A list of those finders whose items were claimed and who agreed to their name being published are included in [Appendix 4](#).

7. Overall 284 (469 had the meeting on 26 March had not been deferred) objects found by members of the public were allocated to Scottish museums; there were dealt with as 94 treasure trove cases (158 had the meeting on 26 March not been deferred). These can be compared to 162 for the previous year, indicating a steady level of reporting of significant material. Details of these cases can be found in [Appendix 3](#). In 2 cases objects were returned to the finder as they attracted no interest from museums. The overall rise in reporting of objects to the Treasure Trove Unit is discussed in 'The Work of the Treasure Trove Unit'.

A total of 294 finders reported objects to the Treasure Trove unit, including those objects which were not claimed.

Finders of objects are routinely offered an ex gratia payment based on the market value of their find. In the period of this report the total sum paid to individuals was £67,580 (£92,035 had the meeting on 26 March not been deferred), with individual payments ranging from £20 to £20,000. In 7 cases the finder waived their ex gratia payment.

In this same period 35 excavation assemblages were declared as result of professional archaeological fieldwork (80 had the meeting on 26 March had not been deferred).

## THE WORK OF THE TREASURE TROVE UNIT

8. The last year was a busy time for the Treasure Trove Unit, involving both significant national and international working. A major commitment during this period was the follow up work to the discovery of the Viking hoard in Dumfries and Galloway where the TTU worked closely with Historic Scotland and local authority archaeologists to carry out excavations on the site and catalogue and conserve the material itself. This latter work is still ongoing. The unit also carried out a number of other small excavations in response to discoveries made by members of the public which were of an archaeologically sensitive nature, including a medieval cast bronze pot in East Lothian, and a Bronze Age hoard on the Isle of Coll.

In this period the TTU dealt with 1651 separate objects reported to them by members of the public and as well as those objects which were allocated to museums there were a further 112 cases where objects were recorded and returned to finders and 109 other enquires regarding objects which did not need to enter the treasure trove system.

The period covered by this report saw another rise in reporting, the Treasure Trove Unit dealing with 432 individual cases of chance finds (as compared to 368 cases the previous year), this reflects a consistent rise in reporting year on year, a result of the outreach work that the TTU carries out. In this period the TTU carried out 30 separate outreach events across Scotland and further afield, many of which were highlighted in the DigIt! 2015 programme. A key part of this was the development of the workshops series intended to give heritage professionals experience of the treasure trove system and encourage museums in their role of regional centres where treasure trove objects could be reported.

At the same time the TTU continued with a series of finds days across Scotland where members of the public could report objects for assessment as well as carrying out visits to metal detecting clubs to assess finds and make sure members were aware of the treasure trove system. This now includes a programme regular finds days, 6 in total, at the Kelvingrove Museum & Art Gallery in Glasgow.

This year TTU also enjoyed collaboration with the Norwegian University of Science and Technology, Trondheim with participation in their internship programme. An

archaeological intern spent 4 months working jointly between TTU and NMS and greatly contributed to our research and activity. TTU has also been working closely with a number of student volunteers from the University of Glasgow archaeology department who have been assisting on a project to digitise the Treasure Trove archive from 1904 to the present day. Further afield, both members of the TTU attended the European Archaeological Association Conference in Istanbul, giving papers on both the artefacts reported as treasure trove and the practical aspects of the system, which have attracted interest from elsewhere in Europe as a heritage management model.

## **ALLOCATION PROCEDURES**

9. [Appendix 5](#) contains Flow Charts, which illustrate:

- (1) the procedures followed between the reporting of a chance find and the paying out of the *ex-gratia* payment and allocation of the find to the museum; the typical time span for these various procedures is within 12 months from date of reporting; and
- (2) the process in relation to items recovered in the course of an archaeological dig.

## **FUNDING**

10. The operational expenses of the SAFAP and TTU comprise mainly staff costs and Administration costs which amounted to around £80,000. These costs are met by grant-in-aid from the Scottish Government to the National Museums of Scotland, which houses the TTU.

## **CONTACT DETAILS OF TTU**

11. The names of the staff of the TTU are contained in [Appendix 6](#) together with their contact details and the website address. Readers are encouraged to contact the TTU with any Treasure Trove query, the answer to which is not dealt with on the website. The members of the Unit are always pleased to help with enquiries from members of the public and have many years' experience of dealing with Treasure Trove matters.

## **INFORMATION FOR USERS OF THE TREASURE TROVE SYSTEM**

12. Information for users of the Treasure Trove system is contained in [Appendix 7](#) and a Reporting Form in [Appendix 8](#). More detailed guidance and information can be found in the Treasure Trove Code of Practice.

## **COMMENTS FROM READERS**

13. The QLTR and SAFAP are keen to obtain readers' comments on the contents of this Report. These can be sent by letter or email to the QLTR Office ([COQLTR@copfs.gsi.gov.uk](mailto:COQLTR@copfs.gsi.gov.uk)).

Queen's and Lord Treasurer's Remembrancer Office  
Scottish Government Building  
1B-Bridge  
Victoria Quay  
Edinburgh  
EH6 6QQ

October 2015



## **APPENDICES**

**Appendix 1** - Names and professional status of members of SAFAP

**Appendix 2** - Terms of Reference of SAFAP

**Appendix 3** - List of allocated Finds, their find spots and recipient museums

**Appendix 4** - List of Finders whose finds were claimed in in this reporting year and who have agreed to their name being published

**Appendix 5** - 2 Flow Charts – Chance Finds and Excavation Assemblages

**Appendix 6** – TTU Contact details (as at October 2015)

**Appendix 7** - Information for users of the Treasure Trove system

**Appendix 8** – Standard reporting form for chance Finds

## Appendix 1

### SAFAP

#### Protecting our Archaeological Heritage for the Nation

#### SCOTTISH ARCHAEOLOGICAL FINDS ALLOCATION PANEL

The Scottish Archaeological Finds Allocation Panel members are appointed by Scottish Ministers, except in the case of the representatives from National Museums Scotland ("NMS"), Museums Galleries Scotland ("MGS") and Historic Scotland ("HS") who are nominated by the respective director, CEO AND Chief Executive of NMS, MGS and HS on behalf of Scottish Ministers.

The current composition of the Panel is as follows:

#### Chair



#### **Dr Evelyn Silber, Hon. Professorial Research Fellow in the History of Art at the University of Glasgow**

Dr Evelyn Silber is a former Director of the Hunterian, University of Glasgow, also of Leeds Museum and Galleries, and Assistant Director at Birmingham Museums and Galleries. From 2006-2009 she was a member of the Historic Environment Advisory Council for Scotland. A historian and art historian by training, originally specialising in medieval manuscript illumination, she has considerable experience of the issues around the acquisition, conservation and presentation of archaeological and numismatic material and the care and presentation of medieval sites for the enjoyment and understanding of the public. Evelyn has lived in Glasgow for 10 years and is involved in several local heritage and cultural tourism projects, including Chairmanship of the Charles Rennie Mackintosh Society.

## Members

### **Neil Curtis, Senior Curator, Marischal Museum, University of Aberdeen**



Neil Curtis is Head of Museums in the University of Aberdeen, including responsibility for Scottish history and archaeology, and is Honorary Senior Lecturer in Anthropology and responsible for the MLitt Museum Studies programme. His research has included museum education, repatriation and the treatment of human remains, and studies of Scottish museum history, including Treasure Trove in Scotland. Associate of the Museums Association and Secretary of the North-East Section of the Society of Antiquaries of Scotland.

### **Jilly Burns, Head of National and International Partnerships, National Museums Scotland**



Jilly Burns is the National Museums Scotland representative on the panel. As Head of National and International Partnerships, she is responsible for the organisations National and International Programmes, which manage and develop the organisations activities and collaboration in Scotland and across the World.

## **Jennifer Siswell, Museums Galleries Scotland**



Jennifer Youngson, Museums Galleries Scotland Jenny Youngson is the Museums Galleries Scotland (MGS) representative on the panel. MGS is the National Development Body for the museum sector in Scotland, working collaboratively to invest in and develop a sustainable museum and galleries sector for Scotland, in line with the aims of Going Further: The National Strategy for Scotland's Museums and Galleries. As Quality Assurance Manager, Jenny is responsible for the support and assessment of the museums within the Accreditation and Recognition Scheme.

## **Richard Welander, Richard Welander, Head of Collections, Historic Scotland**



Trained as an archaeological conservator, Richard Welander has worked in Scottish archaeology for more than 30 years. He has extensive field and post-excavation conservation experience, managing the Ancient Monuments Laboratory in Edinburgh until its closure in 1992. The author of Historic Scotland's operational policy on 'The Treatment of Human Remains in Archaeology', he has had a long interest in the evidential preservation of all excavated finds, serving for many years on the former Finds Disposal Panel and, as its last chairman, overseeing the successful transfer of its function to the Treasure Trove Unit. Heading up Historic Scotland's Collections Unit, he is now responsible for the care of large and varied collections at more than 160 sites across Scotland. He joined the panel on 31st January 2014 as a representative for Historic Scotland.

## **Murray Cook**



Murray Cook is Stirling Council's Archaeologist and the Co-Director of Rampart Scotland. He graduated from Edinburgh University in 1995 has since worked in a variety of roles across Archaeology in Scotland and Northern England. He is currently undertaking a PhD on Aberdeenshire hillforts at Edinburgh University.

## **Dr Mary MacLeod Rivett - Lecturer in Archaeology, Lews Castle College, University of the Highlands & Islands**



Dr Mary MacLeod Rivett is a lecturer in Archaeology in Lews Castle College, UHI, and consultant archaeologist. From 1998 to 2009, she worked as Regional Archaeologist for the Western Isles, has twice served on the Council of the Society of Antiquaries of Scotland, and is a director of the Scottish Coastal Archaeology & the Problem of Erosion (SCAPE) Trust. Dr MacLeod Rivett has wide international excavation and post-excavation experience, managing and working on academic, commercial and community archaeological projects, and is also a crofter.

## Appendix 2

### SCOTTISH ARCHAEOLOGICAL FINDS ALLOCATION PANEL

#### TERMS OF REFERENCE

##### Status

1. The Panel is a non-statutory advisory committee established to assist the Queen's and Lord Treasurer's Remembrancer ("QLTR") in discharging her functions in relation to portable antiquities. Scottish Ministers appoint the Panel and provide resources in order to allow the Panel to carry out its remit.
2. The Panel is supported in its work by a secretariat (i.e. the Treasure Trove Unit). The secretariat is currently hosted by National Museums Scotland ("NMS").

##### Membership

3. The Panel usually comprises a Chair and originally five, increased to seven, members. The Chair and Panel members are appointed for a fixed term (renewable) by Scottish Ministers, except in the case of each of the *ex officio* members, one from each of NMS, Museums Galleries Scotland and Historic Scotland, who are nominated by the respective heads of those organisations.
4. Members of the secretariat attend Panel meetings to provide information as required by the Chair and to record the Panel business.
5. The QLTR is entitled to attend Panel meetings and members of the QLTR staff may attend Panel meetings with the agreement of the Chair.
6. Other individuals may on occasion be invited to attend Panel meetings at the discretion of the Chair.

## Remit

7. The Panel's role is to advise the QLTR on valuations and allocations of portable antiquities claimed by the Crown. In carrying out its valuation and allocation work in relation to portable antiquities the Panel is to apply the criteria and follow the procedures set out in the Code of Practice. When considering the valuation and allocation of any claimed item, the Panel may recommend disclaiming to the QLTR.

8. The Panel will respond to requests from the QLTR for advice, comment or action.

9. The Panel will respond to requests from Scottish Ministers.

10. The Chair will liaise with other relevant bodies at her discretion.

11. The Panel will, as required by the QLTR, assist in the definition and dissemination of good practice in relation to Scottish portable antiquities and will assist the QLTR in the production of an annual report on the work of the Panel.

## Appendix 3

### ALLOCATIONS OF TREASURE TROVE CASES April 2014 – March 2015

The following is a list of cases claimed by the Crown and allocated to the museums or museum services indicated. The list comprises cases dealt with by the Panel at its meetings of July and November 2014 and is organised by the council area in which finds were discovered.

Where a case is marked as 'Disclaimed' it did not attract any applications from museums and was returned to the finder

Contact details along with addresses and opening hours for all museums can be found at: [www.museumsgalleriesscotland.org.uk](http://www.museumsgalleriesscotland.org.uk)

Guide to symbols

\* objects acquired by listed museum in absence of any applications from local museums

**Local Authority Area      Findspot                      Allocation                      TT.No**

#### **Aberdeenshire**

Prehistoric stone whorl	Duncanstone	University of Aberdeen Museums	013/14
Fragment of Bronze Age blade	Rickarton	University of Aberdeen Museums	042/14
17th century finger ring	Inverbervie	Aberdeenshire Museum Service	049/14
Medieval key	Macduff	Aberdeenshire Museum Service	052/14
Prehistoric pot	Fordmouth	University of Aberdeen Museums	095/14
Prehistoric axehead	Fraserburgh	University of Aberdeen Museums	116/14
Neolithic stone axehead	Udny	University of Aberdeen Museums	124/14

#### **Aberdeen City**

Bronze Age and modern excavation assemblage	Tulloch Hill, Aberdeen	Aberdeen Art Gallery and Museums	081/14
---	------------------------	----------------------------------	--------



## Angus

Medieval Papal Bulla	Brechin	Angus Museums:Montrose Museum	004/14
Fragment of medieval silver figurine	Panbride	Angus Museums:Arbroath Museum	005/14
1 medieval coin from a hoard	Kirriemuir	Angus Museums:Kirriemuir Museum	010/14
Medieval silver finger ring	Kirriemuir	Angus Museums:Kirriemuir Museum	048/14
Medieval dress pin	Forfar	Angus Museums:Forfar Museum	051/14
5 coins from a medieval hoard	Kirriemuir	Angus Museums: Kirriemuir Gateway to the Glens	088/14
2 coins from a medieval hoard	Kirriemuir	Angus Museums: Kirriemuir Gateway to the Glens	089/14
1 medieval coin from a hoard	Kirriemuir	Angus Museums:Kirriemuir Museum	009/14
13 coins from a medieval hoard	Kirriemuir	Angus Museums: Kirriemuir Gateway to the Glens	090/14
Medieval silver penny	Forfar	National Museums Scotland	096/14
Post-medieval finger ring	Edzell	Angus Museums: Brechin Town House Museum	112/14
Neolithic stone axehead	Montrose	Angus Museums: Panmure Place	123/14

## Edinburgh City

Middle Bronze Age axehead	Ratho	Museum of Edinburgh	026/14
Neolithic stone axehead	Dalmeny	Museum of Edinburgh	054/14
Modern excavation assemblage	Gorgie Road, Edinburgh	Museum of Edinburgh	055/14
Medieval - Post Medieval excavation assemblage	Greyfriars Kirkhouse, Edinburgh	Museum of Edinburgh	056/14
Medieval - Post Medieval excavation assemblage	Liquid Room (Former St John's Church), Edinburgh	Museum of Edinburgh	057/14
Medieval - Modern excavation assemblage	Castle Rock, Princes Street Gardens, Edinburgh	Museum of Edinburgh	061/14
Medieval - Modern excavation assemblage	18 - 22 Potterrow, Edinburgh	Museum of Edinburgh	067/14
Modern excavation assemblage	Braid Burn Flood Prevention Scheme, Portobello	Museum of Edinburgh	073/14
Modern excavation assemblage	Towerbank Primary School, Portobello	Museum of Edinburgh	080/14
Post Medieval - Modern excavation assemblage	Lamb's House, Leith	Museum of Edinburgh	085/14

## Dumfries & Galloway

Early Historic enamelled mount	Glenloch	Stewartry Museum	022/14
Medieval silver pendant	Twynholm	Stewartry Museum	025/14
2 Roman coins	Glenloch	Stewartry Museum	031/14
3 pieces of Viking silver	Glenloch	Stewartry Museum	036/14
Medieval pilgrim badge	Kirkcudbright	Stewartry Museum	038/14
17th century finger ring	Parton	Stewartry Museum	047/14
Bronze Age axehead	Dumfries	Dumfries Museum	094/14
Roman coin hoard	nr Glenloch	Dumfries Museum	098/14

## East Ayrshire

Late 18th - 20th century excavation assemblage	Greenburn OCCS, New Cumnock	Disclaimed	060/14
16th century architectural fragments	Greenburn Surface Mine Wellhill Extension, New Cumnock	Disclaimed	069/14
Medieval coin hoard	Darvel	National Museums Scotland*	107/14
Medieval coin hoard	Galston	Hunterian Museum & Art Gallery*	108/14

## East Lothian

Medieval enamelled plate	Longniddry	East Lothian Council Museums Service	018/14
Medieval silver gilt finger ring	Longniddry	East Lothian Council Museums Service	028/14
18th century political button	Haddington	East Lothian Council Museums Service	046/14
Early Bronze Age axehead	Garvald	East Lothian Council Museums Service	053/14
Unknown and post medieval/modern excavation assemblage	North Berwick Law: Improvements to Summit Path, North Berwick Law,	East Lothian Council Museums Service	071/14
Post medieval excavation assemblage	Land off Main Street, Stenton,	East Lothian Council Museums Service	074/14
Prehistoric and medieval excavation assemblage	Orchardfield, East Linton,	East Lothian Council Museums Service	075/14
Roman, post medieval and modern excavation assemblage	2 Smeaton Grove, Inveresk	National Museums Scotland	077/14
Prehistoric - Modern excavation assemblage	Edinburgh Drinking Water Pipeline and Glencorse Water Treatment Works	Museum of Edinburgh	065/14
18th - 20th century excavation assemblage	Water of Leith Flood Prevention Scheme	Museum of Edinburgh	072/14

## Falkirk

17 <sup>th</sup> century dress fitting	Airth	Falkirk Community Trust	003/14
4 Roman objects	Blackness	Falkirk Community Trust	045/14
Iron Age Tankard handle	Airth	Falkirk Community Trust	100/14
16th century coin	Bo'ness	National Museums Scotland*	118/14

## Fife

2 17th century buttons	Wemyss	Fife Cultural Trust: Kirkcaldy Galleries	011/14
Roman brooch	Limekilns	Fife Cultural Trust: Kirkcaldy Galleries	016/14
Post-medieval silver toilet implement	Cupar	Fife Cultural Trust: Kirkcaldy Galleries	017/14
4 Roman coins	Wemyss	Fife Cultural Trust: Kirkcaldy Galleries	033/14
Medieval silver finger ring	Ladybank	Fife Cultural Trust: Kirkcaldy Galleries	039/14
Medieval & later assemblage	Wemyss	Fife Cultural Trust: Kirkcaldy Galleries	044/14
Prehistoric and medieval excavation assemblage	Keir Wood Fort, Kincardine	National Museums Scotland*	082/14
16th century coin hoard	nr Lindores	Fife Cultural Trust: Kirkcaldy Galleries	119/14

## Highland

18th century shoulder belt plate	Croy	Inverness Museum & Art Gallery	012/14
Early Bronze Age flat axehead	Dores	Inverness Museum & Art Gallery	027/14
Iron Age toggle fastener	Milton	Inverness Museum & Art Gallery	030/14
Fragment of medieval altar stone	Wick	Dunbeath Heritage Centre	043/14
Iron Age torc	Nairn	National Museums Scotland*	086/14
Iron Age brooch	Nairn	National Museums Scotland*	087/14
Medieval and later assemblage	Nairn	Nairn Museum	109/14
Post-medieval dirk	Culloden	Inverness Museum	115/14

## Moray

Medieval zoomorphic swivel ring	Urquhart	Elgin Museum	102/14
2 Roman coins	Urquhart	Elgin Museum	103/14
Medieval and post-medieval finds	Lhanbryde	Elgin Museum	104/14
Medieval/post-medieval lead patron	Burghead	Elgin Museum	105/14

## North Ayrshire

19th - 20th century excavation assemblage	Cottage and Railway loading dock, Benslie, Kilwinning,	Disclaimed	83/14
---	--	------------	-------

## Orkney

Neolithic excavation assemblage	Skaill Bay	Orkney Museum	084/14
Pictish symbol stone	Sanday	Orkney Museum	125/14

## Perth & Kinross

1 medieval coin from a hoard	Methven	Perth Museum & Art Gallery	002/14
Stone bead/whorl	Loch Leven	Perth Museum & Art Gallery	014/14
Medieval zoomorphic buckle	Aberuthven	Perth Museum & Art Gallery	019/14
Medieval silver finger ring	Bankfoot	Perth Museum & Art Gallery	020/14
17th century pierced coin	Scone	Perth Museum & Art Gallery	021/14
Medieval heraldic pendant	Bankfoot	Perth Museum & Art Gallery	023/14
Seal Matrix and vessel leg	Bankfoot	Disclaimed	024/14
2 Roman coins	Blairadam	Perth Museum & Art Gallery	032/14
6 medieval coins	Luncarty	Perth Museum & Art Gallery	034/14
Medieval silver finger ring	Bankfoot	Perth Museum & Art Gallery	037/14
Middle Bronze Age axehead/chisel	Moneydie	Perth Museum & Art Gallery	050/14
Prehistoric excavation assemblage	Haughend Farm, Alyth	Perth Museum & Art Gallery	068/14
Medieval gold coin	Loch Leven	Perth Museum & Art Gallery	091/14
Medieval gold finger ring	Loch Leven	National Museums Scotland	092/14
Roman brooch	Loch Leven		093/14
15th century mount	Ballinluig	Perth Museum & Art Gallery	106/14
Roman brooch	Pitlochry	Perth Museum & Art Gallery	113/14

## Scottish Borders

Middle Bronze Age chisel	Hawick	National Museums Scotland*	001/14
Medieval brooch	Peebles	Tweeddale Museum	006/14
Bronze Age chisel	Peebles	Tweeddale Museum	007/14
Medieval coin hoard	Jedburgh	Jedburgh Castle Jail and Museum	029/14
Roman brooch and coin	Galashiels	National Museums Scotland*	040/14
Post-medieval military assemblage	Roberton	National Museums Scotland*	041/14
12 - 13th century excavation assemblage incl. architectural stone fragments	Coldingham Priory Church, Coldingham	National Museums Scotland*	062/14
Prehistoric and post medieval excavation assemblage	Drone Hill Windfarm, Coldingham	National Museums Scotland*	063/14
Prehistoric excavation assemblage	New Water Main, Duns Law Farm, Duns	National Museums Scotland*	064/14
Anglo-saxon (7th - 9th centuries) Prehistoric and modern excavation assemblage	Fallago Rig Windfarm, Longformacus	National Museums Scotland*	066/14
Mesolithic to Bronze Age excavation assemblage	Rumbeltonlaw Sand and Gravel Quarry	National Museums Scotland*	076/14
12th century excavation assemblage	Smiddy Corner, Nenthorn, Kelso	Disclaimed	078/14
Medieval and later finds	Ayton	Coldstream Museum	114/14
Roman eagle Mount	Coldstream	Coldstream Museum	117/14
Iron Age terret fragment	Hawick	National Museums Scotland*	120/14
Early Historic hanging bowl mount	Oxton	Scottish Borders Museums Service: Selkirk	121/14
Medieval enamelled mount	Branxholme	Disclaimed	122/14

## South Lanarkshire

Medieval silver finger ring	East Kilbride	Low Parks Museum	008/14
6 medieval coins	Crawford	Biggar Museum Trust	035/14
Prehistoric (Early to mid-Neolithic) excavation assemblage	Larkhall Academy, Larkhall	Glasgow Museums	070/14
Roman Brooch	nr Carnwath	Biggar Museum Trust	097/14
Medieval Harness pendant	Lamington	Biggar Museum Trust	110/14
Post-medieval weight set	Lamington	Biggar Museum Trust	111/14

### West Dunbartonshire

Post-medieval toy pan	Dumbarton	Clydebank Museum & Art Gallery	015/14
Prehistoric excavation assemblage	Alexadria Health and Care Centre, Vale of Leven Hospital, Alexandria	Clydebank Museum & Art Gallery	058/14

### West Lothian

Post-medieval toy hammer	Torphichen	West Lothian Museum Service	099/14
Medieval Papal Bulla	Torphichen	West Lothian Museum Service	101/14
Post Medieval - Modern excavation assemblage	Armadale Masterplan, Armadale	Disclaimed	059/14

### Na h-Eileanan Siar (Western Isles)

Middle Iron Age and 19th century excavation assemblage	Teampull Na Trionaid, Cairinis, North Uist	Museum nan Eilean	079/14
--	--	-------------------	--------

## **Appendix 4**

### **LIST OF FINDERS WHOSE FINDS WERE CLAIMED IN THIS REPORTING YEAR AND WHO HAVE AGREED TO THEIR NAME BEING PUBLISHED**

Raymond Barr  
David Bartholomew  
John Branagh  
George Cairns  
Jim Crombie  
James Foster  
Ian Hughes  
Stuart Lees  
Jack Leihne  
Kenny Lindsay  
Robert Marshall  
Robert McGarry  
Alan McGregor  
Jim McGuire  
James McLeod  
Martin McSweeney  
John Morris  
Caroline Paterson  
Gus Paterson  
Fraser Richardson  
Philip Saunderson  
Brian Sinclair  
Crawford Stewart  
Richard Stewart  
Didie Wells  
David Wernham  
Iain West

### **ORGANISATIONS**

Addyman Archaeology  
Alder Archaeology  
Ann Clarke Freelance Archaeologist  
AOC Archaeology Group  
Cameron Archaeology Ltd  
CFA Archaeology Ltd  
Headland Archaeology Ltd  
Highland Archaeology Services  
Kilwinning Heritage  
Murray Archaeological Services  
Perth & Kinross Heritage Trust  
Ross and Cromarty Archaeology Services  
Stuart Farrell  
University of Bradford/Shetland Amenity Trust





<p>Recipient museum applies to NFA for grant aid then sends cheque to QLTR</p> <p style="text-align: center;">↓</p> <p>QLTR sends <i>ex gratia</i> reward payment and certificate to the finder</p> <p style="text-align: center;">↓</p> <p>Recipient museum collects the portable antiquity from the TTU and registers as part of its collection</p>	
---	--

Abbreviations

TTU: Treasure Trove Unit

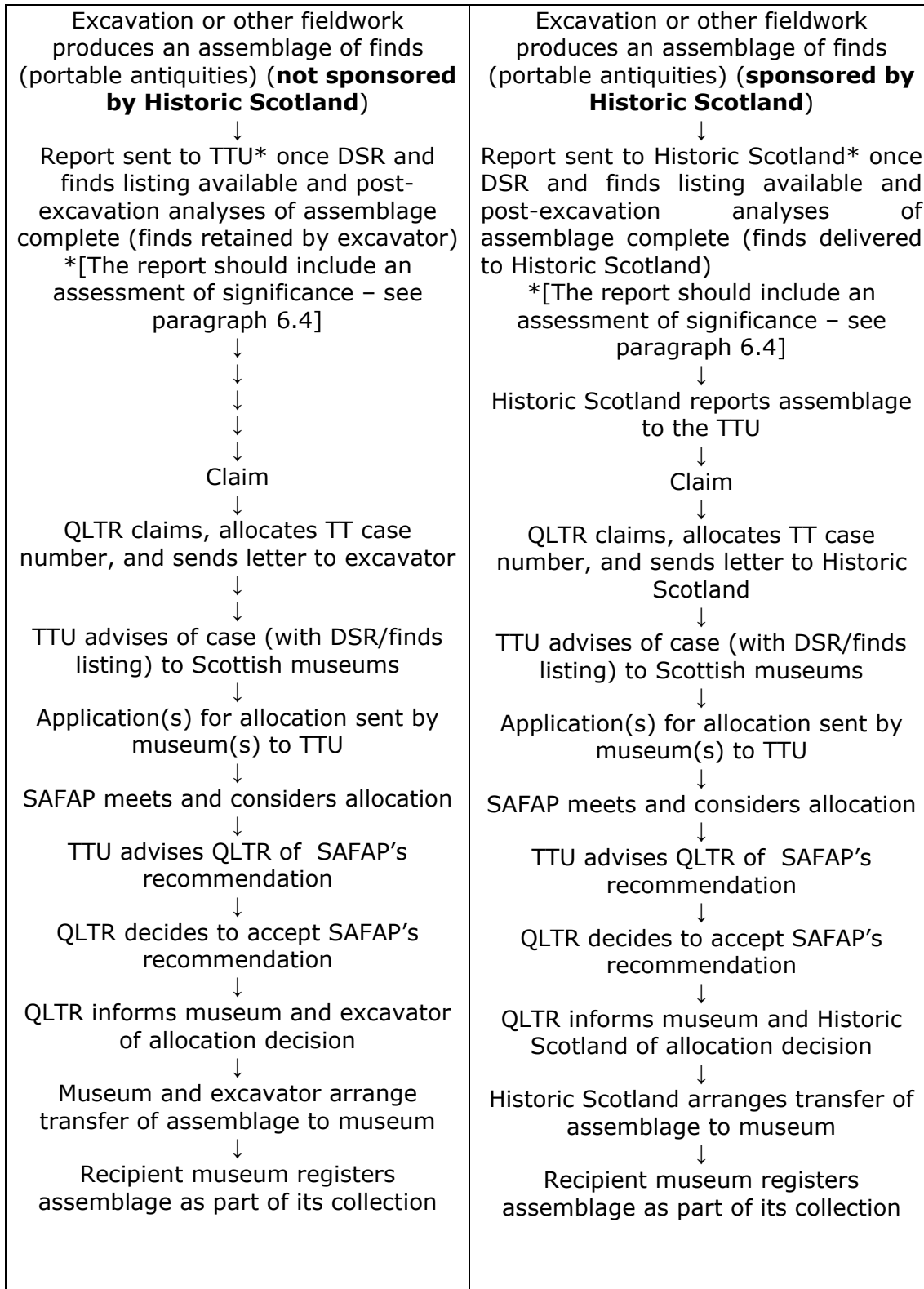
QLTR: Queen's & Lord Treasurer's Remembrancer

SAFAP: Scottish Archaeological Finds Allocation Panel

NFA: National Fund for Acquisitions

**TREASURE TROVE PROCESS FLOW-CHART: CLAIMED EXCAVATION ASSEMBLAGES**

(n.b. there are slightly divergent pathways for assemblages depending on whether or not they derive from projects sponsored by Historic Scotland)



Abbreviations

TTU: Treasure Trove Unit

QLTR: Queen’s & Lord Treasurer’s Remembrancer

SAFAP: Scottish Archaeological Finds Allocation Panel  
DSR: Data Structure Report

Note: if an assemblage is not considered suitable for claiming the TTU has delegated authority from the QLTR to disclaim the assemblage

## **Appendix 6**

### **TTU CONTACT DETAILS**

TREASURE TROVE UNIT  
National Museums Scotland  
Chambers Street  
Edinburgh  
EH1 1JF

[info@treasuretrovescotland.co.uk](mailto:info@treasuretrovescotland.co.uk)

[www.treasuretrovescotland.co.uk](http://www.treasuretrovescotland.co.uk)

Head of Unit - Stuart Campbell, Tel no. 0131 247 4355

Treasure Trove Administrator – Natasha Ferguson, Tel no. 0131 247 4082

## Appendix 7

### INFORMATION FOR USERS OF THE TREASURE TROVE SYSTEM

#### INFORMATION FOR FINDERS

##### **What to do if you make a find**

- The Crown is entitled to claim any finds made in Scotland, whether these are made by chance, by metal-detecting, fieldwalking or archaeological excavation and such finds may be claimed as treasure trove
- If you have found a coin and/or object which may be of historical or archaeological interest or importance you must report it for treasure trove assessment.
- If you are not sure what type of find should be reported please contact the Treasure Trove Unit ("TTU") for advice in the first instance
- It is important not to dismiss a find if you don't know what it is. The most unpromising find can turn out to be an important missing piece of the past.
- The **Case archive** page on the website has examples of recent finds which have been claimed as treasure trove and details of the museums to which they have been allocated.

##### **How to report a find**

- Download and complete a reporting form from the website
- email it to: [info@treasuretrovescotland.co.uk](mailto:info@treasuretrovescotland.co.uk)
- or post it to the TTU
- or telephone and ask for a form to be sent to you
- if you have a digital image of the find you have made it is very helpful to include this as an email attachment or as a hard copy along with your form.

##### **What will happen next**

- The TTU will contact you to acknowledge receipt of your form
- If the find needs to be assessed arrangements will be made with you for the find to be delivered to the Treasure Trove Unit
- If the find is not appropriate for further treasure trove assessment you will be advised

##### **Finds which are claimed as Treasure Trove**

- The TTU will send you details of the procedures and timescales involved and you will receive a digital image and information on the find
- The QLTR Office will also write to you to formally claim the find and will give you information regarding an ex gratia payment

##### **Finds which are not claimed as Treasure Trove**

- Finds which are not claimed by the Crown are returned to the finder by the TTU along with an individually numbered certificate stating that the Crown is not exercising its right to claim.

### **Treatment of finds**

- Please do not clean or apply substances such as wax or lacquer etc to coins or objects you have found. Ex gratia payments may be reduced or waived for finds which have been treated and/or damaged by cleaning or the application of such substances.
- Please consult **Treatment of finds** page on the website for information.

### **Illegal removal or disposal of finds from Scotland**

- Unauthorised removal or disposal of finds may amount to theft, since finds are the property of the Crown, not the finder or landowner. Please consult the **Legal position** page on the website.

### **Use of a metal detector in Scotland**

- Finds made in Scotland using a metal detector must be reported for treasure trove assessment.
- Under section 42 of the Ancient Monuments and Archaeological Areas Act (1979) it is a criminal offence to use a metal detector on a scheduled ancient monument or a monument in the guardianship of the State.
- It is also an offence to remove from such a monument, any object of archaeological or historical interest found using a metal detector.

## INFORMATION FOR MUSEUMS

### **Advertising of new Treasure Trove cases**

- New cases will be advertised on the Treasure Trove website on the **Information for Museums** page
- New cases will also be advertised in the Museums Galleries Scotland e-bulletin *Connect*.

### **Bidding for Treasure Trove cases**

- Museums should request case details from the TTU for any case they wish to bid for
- Museums intending to bid for Treasure Trove cases should submit these in accordance with the **Code of Practice**.
- All bids must be submitted on the standard **application form** (downloadable from the website)
- Deadlines for submitting bids will be notified on the website and in the MGS bulletin

### **Submitting finds for Treasure Trove assessment**

- All finds submitted to the TTU should be accompanied by a **reporting form** (downloadable from the website)

### **Collection of allocated Treasure Trove finds**

- Museums should make arrangements with the TTU to collect finds once payment has been made to the QLTR Office.
- Please give 48 hours notice to TTU staff

### **Loans of unallocated Treasure Trove for display**

- Museums wishing to borrow unallocated Treasure Trove material for display are requested to complete a **museums loan form** (downloadable from the website) and return it to the TTU.

### **National Fund for Acquisitions**

- Museums may be eligible to apply for a grant towards the purchase of treasure trove allocations from the National Fund for Acquisitions. Further details are available on the website.

TREASURE TROVE UNIT (TTU)  
NATIONAL MUSEUMS SCOTLAND  
CHAMBERS STREET  
EDINBURGH  
EH1 1JF

**Email:** [info@treasuretrovescotland.co.uk](mailto:info@treasuretrovescotland.co.uk)

**Website:** [www.treasuretrovescotland.co.uk](http://www.treasuretrovescotland.co.uk)



## INFORMATION FOR ARCHAEOLOGY UNITS and OTHER FIELDWORKERS

### **How the Treasure Trove system operates**

- Guidance on Treasure Trove procedures for Fieldwork units is downloadable from the website on the **Information for Units** page.

### **How to report assemblages**

- All finds recovered in the course of archaeological fieldwork in Scotland must be reported to the TTU. A **fieldwork reporting form** is downloadable from the website.

### **Removal of finds from Scotland**

- Archaeology Units or fieldworkers wishing to remove finds from Scotland must complete a **Unit Loan application form** downloadable from the website.
- Please read the section on the legal implications of the export of finds from Scotland.

### **Reporting to Historic Scotland (ex Finds Disposal Panel)**

- Individuals, archaeology units or other organizations undertaking fieldwork funded by Historic Scotland which results in the recovery of artefacts should continue to report to Historic Scotland as previously.
- The TTU will then liaise with Historic Scotland regarding the processing of fieldwork cases through the Treasure Trove system.
- Museum storage grants for assemblages from Historic Scotland funded projects will continue to be available from Historic Scotland.

## Appendix 8

### Standard reporting form for chance finds



Treasure  
Trove

#### REPORTING OF FINDS FOR TREASURE TROVE ASSESSMENT

Finder's name:

Address:

Town:

Postcode:

County/Region:

Contact tel:

Email:

Please tick box if all future correspondence by email is preferred

---

Description of object found:  
(eg axehead, brooch, iron object etc)

Date object found:

Findspot of object:

National Grid Reference:  
(eg NT 23863 78492)

or GPS reference:

Nearest town/village:

County/region:

#### **Method of discovery**

Discovered by metal-detecting  (please tick box if applicable)

Discovered by chance  (please tick box if applicable)  
(e.g. whilst walking, ploughing, etc)

Being declared for other reasons  (please tick box if applicable)  
(e.g. house clearance)

**Please give information on current and/or previous land use, or on previous finds from the findspot which you think may be relevant:**

#### **Acknowledgement of finder in display**

*Note: it is a matter for a museum whether it will include any acknowledgement of the finder in its display.*

If the find is allocated to a museum, I would like any labeling of a display of the find to acknowledge me as the finder if the museum will include that in the labeling:

Yes/no (please indicate)

If Yes, I agree to my name, address and contact details being released to any museum allocated the find:

(please tick box if you agree)

## **Declaration**

I confirm that I am the finder of the object(s) declared above:    yes/no (please indicate)

Finder's signature:

Finder's name (please print):

### **Please return this form to:**

Treasure Trove Unit  
National Museums Scotland  
Chambers Street  
Edinburgh EH1 1JF  
Tel: 0131-247-4082/4355  
email: [info@treasuretrovescotland.co.uk](mailto:info@treasuretrovescotland.co.uk)

<http://www.treasuretrovescotland.co.uk/>